

# Klamath Water & Power Agency

## 2014 Water Supplementation Program

# Agenda

- Introductions
  - Board
  - Staff
- WUMP Purpose & Goals
- Water Supply Outlook
- Surface Forbearance Program – WUMP 2014
- Questions ?

# WUMP Purpose & Goals

Purpose is to close the gap between supply and demand.

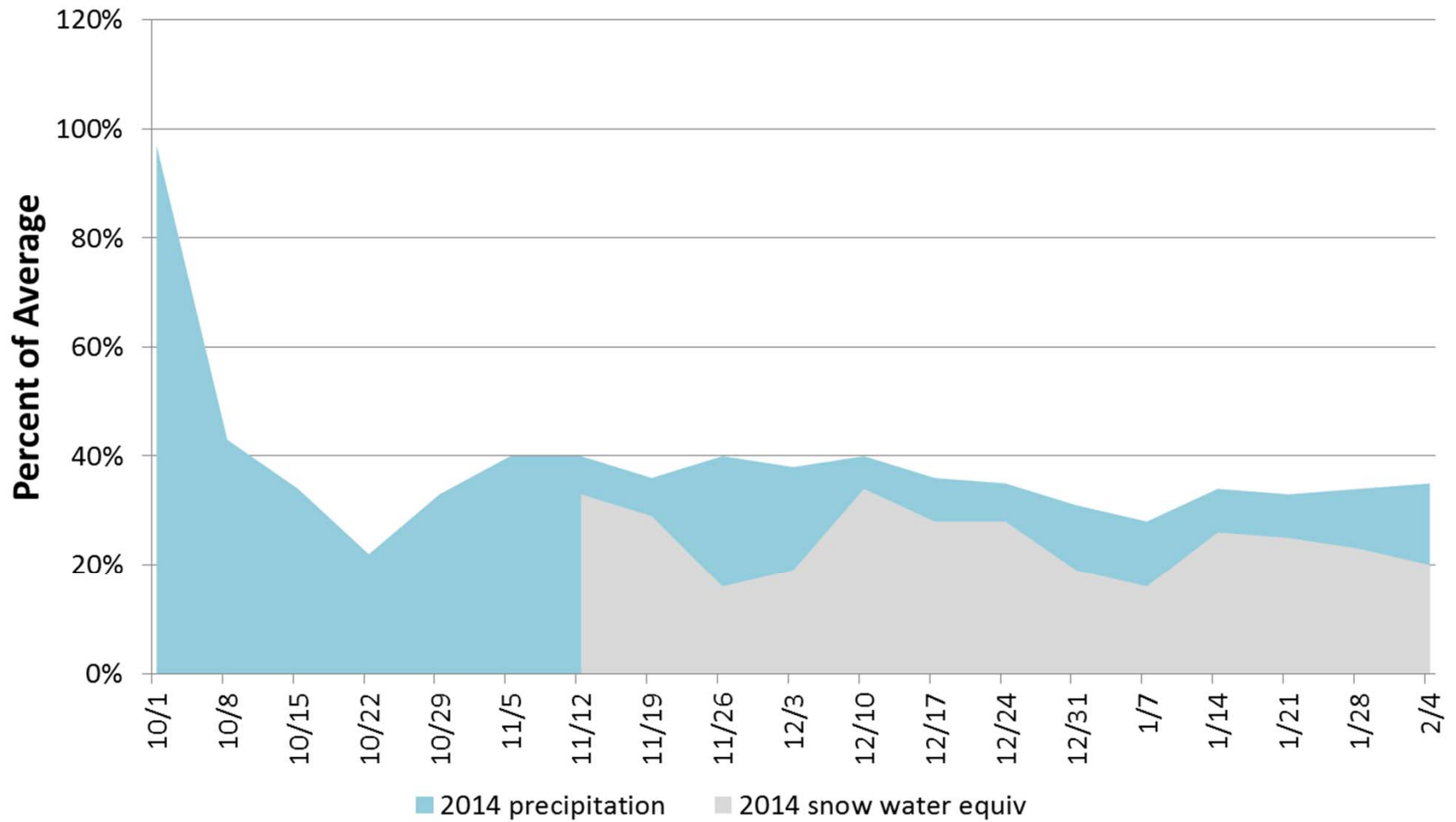
# Rain Snow Across Oregon Not Enough to Break Drought That has Worsened over the Past Year

Feb. 8, 2014

AP Jeff Barnard

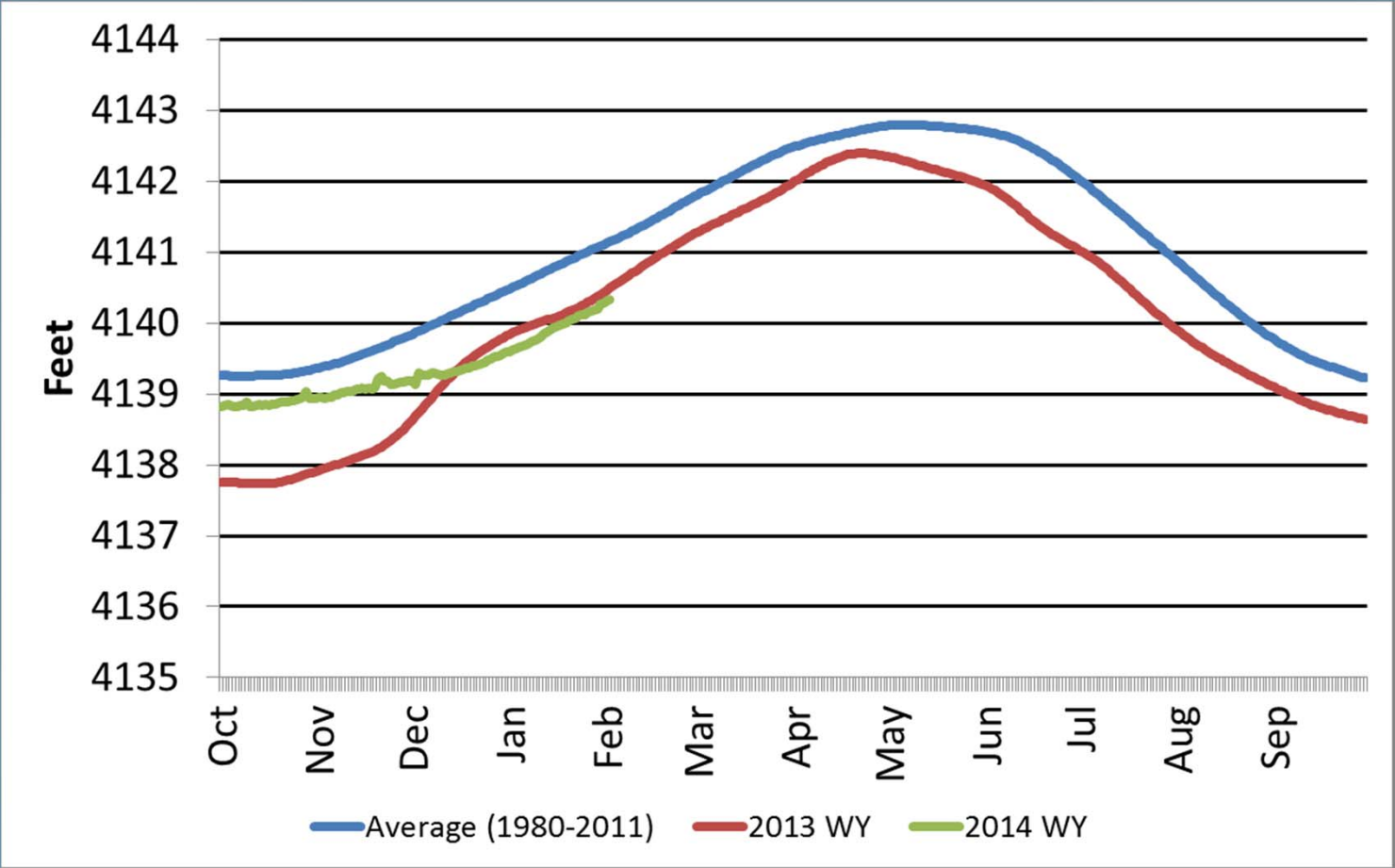
- The rain and snow falling across Oregon are far from enough to break the drought.
  - Snowpack levels across most of the state Friday were less than half of normal, and the drought index was still severe to moderate. Dozens of sites in Southern Oregon showed the lowest snowpack since the 1940s, when records were first kept.
- The National Weather Service predicts storms for the next week or more. But the three-month forecast offers little hope, with an even chance for above-normal, below-normal, and just plain normal precipitation.
  - "We've got a pretty big hole we have to fill here," said Greg Addington, executive director of the Klamath Water Users Association, which represents farmers on a federal irrigation project south of Klamath Falls. "And we definitely need Mother Nature's to help do it."

### Klamath Basin YTD Precipitation and Snowpack



Graph by Bureau of Reclamation

# Upper Klamath Lake Elevation



Graph by Bureau of Reclamation

# 2014 Projected Water Supply -Upper Klamath Lake February 1, 2014

## Upper Klamath Lake NRCS February through September Inflow Forecasts

<b>% Exceedance Inflow Forecast</b>	<b>Forecasted Inflow Volume (AF)</b>	<b>% of Average Inflow</b>	<b>Est Klamath Project UKL Supply (AF)</b>	<b>% of Maximum UKL Irrigation Supply</b>
<b>30%</b>	<b>387,000</b>	<b>49%</b>	<b>141,000</b>	<b>36%</b>
<b>50%</b>	<b>290,000</b>	<b>36%</b>	<b>62,000</b>	<b>16%</b>
<b>70%</b>	<b>193,000</b>	<b>24%</b>	<b>0</b>	<b>0%</b>

Slide by Bureau of Reclamation

# 2014 Program

- This program is different than 2013 as it is an agreement to not use surface water:
  - Surface water forbearance program.
- Implemented at the direction of the KWAPA Board of Directors and Reclamation
- Bid Options
  - Dry Option
  - Wet Option
- Payment (3 installment payments)
- Penalty for non-compliance



# 2014 Program (cont.)

## Important Dates

### Application Phase:

- **February 21, 2013** by 12:00 pm - Applications due & 1 pm bid opening  
KWAPA will process application, including mapping & verification.
- **March 1, 2014** – Water Supply Report
- **March 4, 2014** – KWAPA Board Meeting -Review bids, set program targets.
- **April 1, 2014** – Reclamation / Project Supply established

### Contracting Phase:

- **April 15, 2014**- Target for contracts to be signed/Commitment

## 2014 Program (cont.)

### Qualifications- All

1. The parcel must be identified in the Order of Determination
2. The parcel **MUST** have been irrigated with surface water and produced an irrigated crop in at least one of the last three years (2011, 2012, or 2013).
3. The applicant and the parcel must be ready, willing, and able to use surface water but agrees to forebear the use of surface water.
4. If the applicant is not the land owner, the applicant must provide authorization signed by the owner.

# 2014 Program (cont.)

Lands ineligible to participate:

- Land only irrigated by groundwater
- Land with “C” contracts
- Refuge lease lands
- Land in walking wetlands or other similar programs

# 2014 Program (cont.)

## Qualifications- **Dry Option**

1. The parcel must be 5 or more contiguous acres in size
2. **No water, from any source other than natural precipitation**, shall have been or shall be applied after November 15, 2013 through the end of the contract period (midnight September 30, 2014).
3. **May plant and harvest such crops** as the Applicant may desire, but shall **not apply any water**.
4. The Applicant shall immediately **notify KWAPA** in the event any water from any source except natural precipitation...
5. Maintenance of cover to sufficiently **control erosion** on bare field.
6. If water is available, applying water to the land between October 1, 2014 and November 15, 2014 will not disqualify you to participate in a 2015 WUMP program.

# 2014 Program (cont.)

## Qualifications- **Wet Option**

Applicant agrees to forebear the use of surface water, but intends to irrigate from another source (i.e. groundwater).

1. The parcel must be **20** or more contiguous **acres in size**
2. **Oregon wells**, must be able to demonstrate the legal right to produce and use groundwater .
3. If irrigating from alternate source, Applicant agrees to:
  - Identify the location from which the land normally received surface water; and
  - The alternate source of water **must be metered**; and
  - If using the irrigation system, the water must be metered “**into the district system with means provided for KWAPA to make a reasonable determination that surface water was not applied**”; and
  - KWAPA may request other information to ensure that surface water is not used.

# Wet Option- (cont.)

4. The contract to “forebear the use of surface water” is binding for the **entire irrigation season** through September 30, 2014 and is subject to the **penalty provision** in section F (7).
5. The KWAPA Board recognizes that extensive **pumping of the groundwater in 2014 could cause groundwater levels to decline** to levels that will trigger regulation of pumping in Oregon. Therefore the contracts that substitute groundwater will be limited to the allocation by groundwater area as recommended by California Department of Water Resources (CDWR) and OWRD.
6. An applicant submitting an application for the “wet” program **must also provide an offer on the same application for the “Dry” program. KWAPA will process the application as a “Wet” offer first**; if the application is not accepted as a “Wet” offer, it will then be considered as a “Dry” offer. The allocation of groundwater, if any, is unknown at this time. ( **SEE FLOW CHART** )
7. **KWAPA does not have the authority to regulate groundwater pumping.** The demand for groundwater is likely to be much greater than the amount contracted for by KWAPA. In the event that groundwater pumping exceeds the amount that is recommended by OWRD and CDWR, KWAPA is not responsible for loss of crop or other damages in the event that drawdown levels are reached and OWRD regulates

# Summary

- This application process and the applications ,will be used by the Board of Directors to make decisions when the March 1<sup>st</sup> supply is known.
- **We strongly encourage everyone** to submit an application and make a “good faith offer” so we have tools to work with closing the gap.

The background is a solid blue gradient. At the top, there are several overlapping, wavy lines in various shades of blue and cyan, creating a layered, wave-like effect.

Questions

?